



# Solar Snow Management



39" x 66" Panels in Portrait or Landscape Orientation							
Ground Snow Load (in PSF)							
Slope/12	Deg°	≤25	30	35	40	45	50
1	4.76	16	13	11	10	9	8
2	9.46	8	6	5	5	4	4
3	14.04	5	4	4	3	3	2
4	18.43	4	3	3	2	2	2
5	22.62	3	3	2	2	2	1
6	26.57	3	2	2	2	1	1
7	30.26	3	2	2	1	1	1
8	33.69	2	2	2	1	1	1
9	36.87	2	2	1	1	1	1
10	39.81	2	2	1	1	1	1
11	42.51	2	2	1	1	1	1
12	45.00	2	2	1	1	1	1
Allowable Number of Panels Between Tiers							

42" x 62" in Portrait or Landscape Orientation							
Ground Snow Load (in PSF)							
Slope/12	Deg°	≤25	30	35	40	45	50
1	4.76	16	13	11	10	8	8
2	9.46	8	6	5	5	4	4
3	14.04	5	4	4	3	3	2
4	18.43	4	3	3	2	2	2
5	22.62	3	3	2	2	2	1
6	26.57	3	2	2	2	1	1
7	30.26	3	2	2	1	1	1
8	33.69	2	2	2	1	1	1
9	36.87	2	2	1	1	1	1
10	39.81	2	2	1	1	1	1
11	42.51	2	2	1	1	1	1
12	45.00	2	2	1	1	1	1
Allowable Number of Panels Between Tiers							

39" x 77" in Portrait Orientation ONLY							
Ground Snow Load (in PSF)							
Slope/12	Deg°	≤25	30	35	40	45	50
1	4.76	13	11	9	8	7	6
2	9.46	7	5	5	4	3	3
3	14.04	4	4	3	3	2	2
4	18.43	3	3	2	2	2	1
5	22.62	3	2	2	2	1	1
6	26.57	2	2	2	1	1	1
7	30.26	2	2	1	1	1	1
8	33.69	2	2	1	1	1	1
9	36.87	2	1	1	1	1	1
10	39.81	2	1	1	1	1	1
11	42.51	2	1	1	1	1	1
12	45.00	2	1	1	1	1	1
Allowable Number of Panels Between Tiers							

For any application outside of these parameters contact Alpine SnowGuards

If the customer desires to use SSP-T-3 snow pads: Alpine SnowGuards recommends installing 3 SSP-T-3 snow pads on each solar panel with a panel below it in both portrait and landscape orientations.

For Solar SnowMax-R2 and Solar SnowMax-Standard: Cross reference the roof pitch of 23° with the Ground Snow Load of 20 PSF (anything less than 25 PSF ground snow load uses 25 PSF) to find that 3 rows of panels are allowable between tiers of snow retention.

This layout will require one row of SSM-R2 at the leading edge and one row of SSM-Standard up to 3 tiers up, or at most 3 tiers down from the top. We would suggest splitting the distance as shown on the example below.

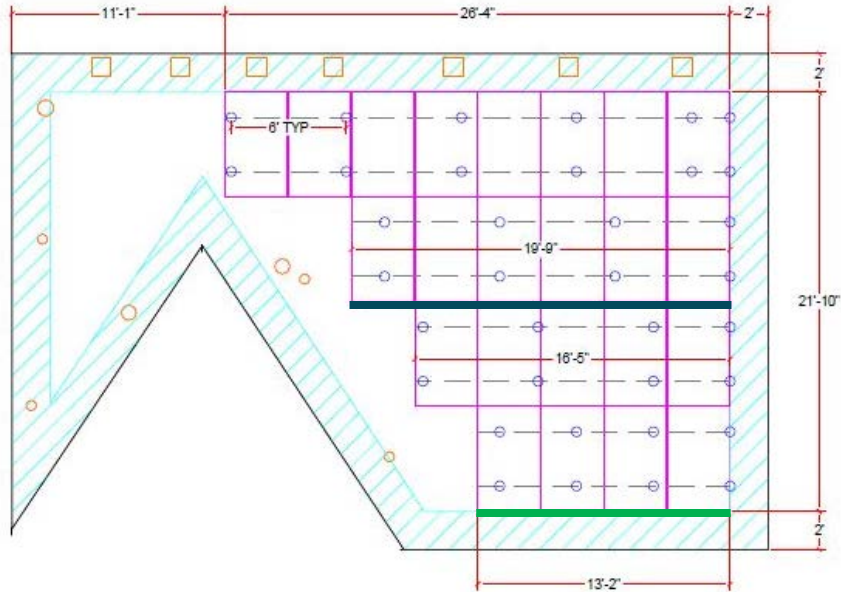
# Example Application

39" x 66" Panels

Portrait

23° Slope

20 PSF Ground Snow Load



- Alpine SnowGuards SSM-R2 system
- Alpine SnowGuards SSM-Standard system

39" x 66" Panels in Portrait or Landscape Orientation							
Ground Snow Load (in PSF)							
Slope/12	Deg°	≤25	30	35	40	45	50
1	4.76	16	13	11	10	9	8
2	9.46	8	6	5	5	4	4
3	14.04	5	4	4	3	3	2
4	18.43	4	3	3	2	2	2
5	22.62	3	3	2	2	2	1
6	26.57	3	2	2	2	1	1
7	30.26	3	2	2	1	1	1
8	33.69	2	2	2	1	1	1
9	36.87	2	2	1	1	1	1
10	39.81	2	2	1	1	1	1
11	42.51	2	2	1	1	1	1
12	45.00	2	2	1	1	1	1

Allowable Number of Panels Between Tiers