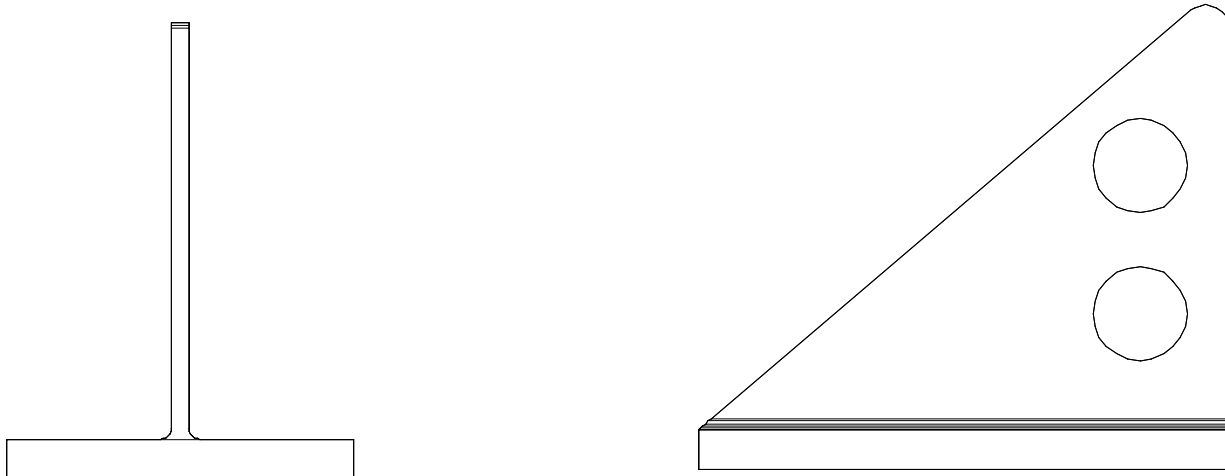
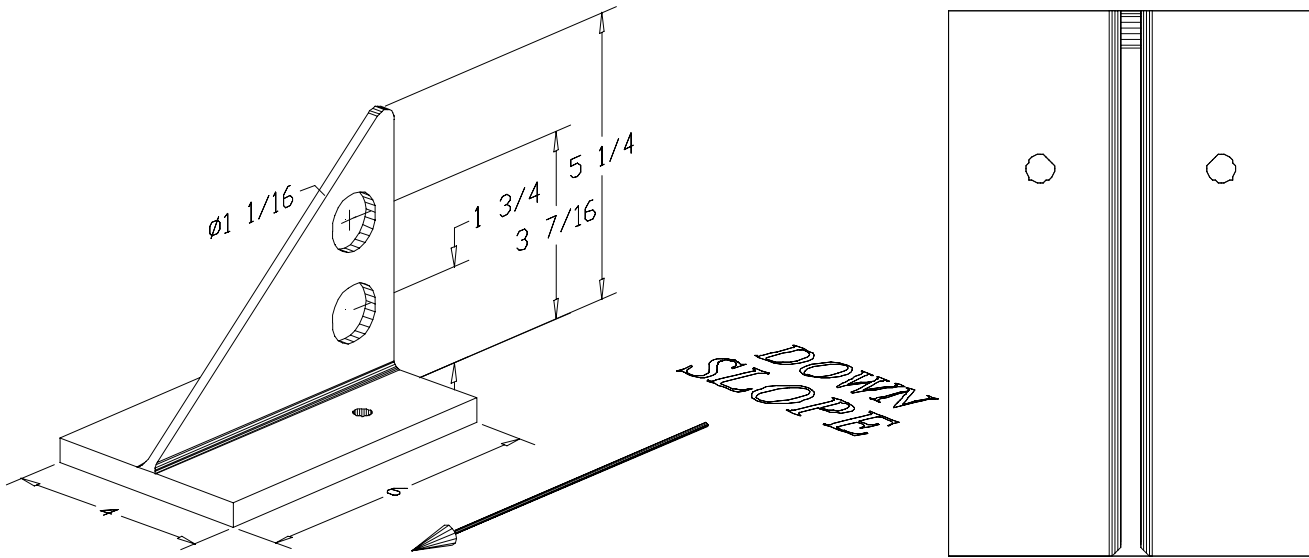




# ALPINE SNOWGUARDS

A Division of Vermont Slate & Copper Services, Inc.

Web [www.alpinesnowguards.com](http://www.alpinesnowguards.com)  
E-mail [info@alpinesnowguards.com](mailto:info@alpinesnowguards.com)  
Toll Free Phone 1.888.766.4273  
Toll Free Fax 1.888.766.9994  
289 Harrell Street, Morrisville, VT 05661



## #145 2-Pipe Style Snowguard Bracket for Through-fastened Metal Roof Applications

Document version 08.02.2004

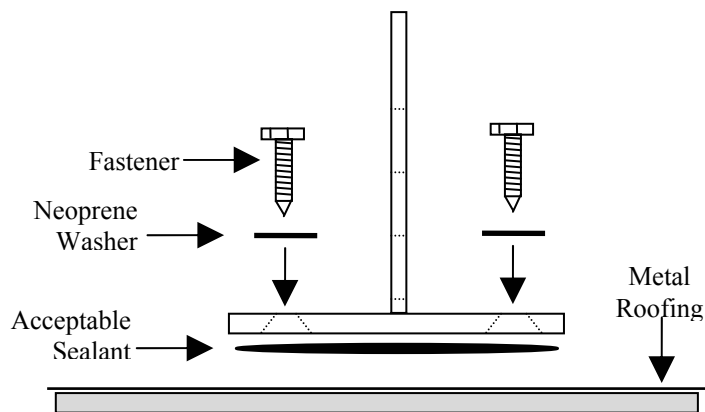


# ALPINE SNOWGUARDS

A Division of Vermont Slate & Copper Services, Inc.

Web [www.alpinesnowguards.com](http://www.alpinesnowguards.com)  
E-mail [info@alpinesnowguards.com](mailto:info@alpinesnowguards.com)  
Toll Free Phone 1.888.766.4273  
Toll Free Fax 1.888.766.9994  
289 Harrell Street, Morrisville, VT 05661

## Installation Instructions for #145 Pipe Style Snowguard



### **Snowguard Layout for Pipe Style Brackets**

- \* Contact the manufacturer for detailed layout.
- \* Horizontal spacing between brackets should be 48" maximum. This may have to be decreased due to variable conditions.
- \* Do not install runs than 100 feet long without a break to allow for thermal expansion.
- \* First row of snowguards is installed above outer most wall or support of the building.
- \* Tubing is 1" O.D. aluminum.
- \* Brackets are made of aluminum and are available in other metals.
- \* One, two and three pipe systems are available.

Document version 08.02.2004



# ALPINE SNOWGUARDS

A Division of Vermont Slate & Copper Services, Inc.

Web [www.alpinesnowguards.com](http://www.alpinesnowguards.com)

E-mail [info@alpinesnowguards.com](mailto:info@alpinesnowguards.com)

Toll Free Phone 1.888.766.4273

Toll Free Fax 1.888.766.9994

289 Harrell Street. Morrisville, VT 05661

## #145 Snowguard Specification Sheet

### **PART 1 - GENERAL**

#### 1.1 SUMMARY

##### A. WORK INCLUDES

1. #145 Snowguard that attaches directly to the roof deck.
2. Provide appropriate snowguard and fasteners for the roof system.

##### B. RELATED SECTIONS

1. Section 07600: Flashing and Sheet Metal.
2. Section 07310: Shingles.
3. Section 07320: Roofing Tiles.
4. Section 07500: Membrane Roofing
5. Division 7: Thermal and Moisture Protection.

#### 1.2 SYSTEM DESCRIPTION

##### A. COMPONENTS:

1. #145 Snowguard system consists of a snowguard bracket.
2. Aluminum tubing.
3. Threaded Couplings.
4. End Caps (optional).
5. End Collars (optional).
6. Fasteners
  - a. To be of metal compatible with snowguards.
  - b. Fasteners should be selected for compatibility with the roof deck.
  - c. Fastener strength should exceed or be equal to that of the snowguard system.
7. Adhesive: to be metal roof manufacturer approved.

##### B. DESIGN REQUIREMENTS:

1. Spacing to be recommended by manufacturer or building engineer.
2. A minimum of 2 fasteners per snowguard.
3. It is important to design new structures or assess existing structures to make sure that they can withstand retained snow loads.

1.3 SUBMITTAL - Submit manufacturer's specifications, standard detail drawings, recommended layout and installation instructions.

1.4 QUALITY ASSURANCE - Installer to be experienced in the installation of specified roofing material for not less than 5 years in the area of the project.

1.5 DELIVERY / STORAGE / HANDLING - Inspect material upon delivery and order replacements for any missing or defective items. Keep materials dry, covered and off the ground until installed.

### **PART 2 - PRODUCTS**

#### 2.1 MANUFACTURER

- A. Alpine SnowGuards. A division of Vermont Slate & Copper Services Inc., P.O. Box 430, Stowe, VT (888) 766-4273.

#### 2.2 MATERIALS

- A. Snowguard Block and Flag are extruded and milled 6061-T6 Aluminum
- B. Tubing is 6061-T6 and/ or 6005-T5, 1" outside diameter and 1/8" wall thickness extruded Aluminum.
- C. Threaded Couplings are 6061-T6 Aluminum 5" long.
- D. End Caps are 302 stainless steel.
- E. End Collars are 6061-T6 Aluminum.

2.3 FINISH - All materials provided mill finish.

### **PART 3 - EXECUTION**

#### 3.1 EXAMINATION

- A. Substrate: Inspect roof system to be properly attached and installed to withstand additional loading incurred. Notify General Contractor of any deficiencies before installing Alpine SnowGuards.

#### 3.2 INSTALLATION

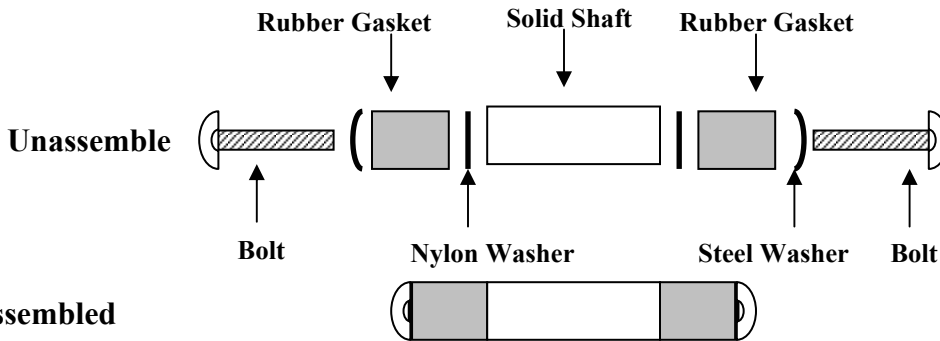
- A. Comply with architectural drawings for location and with Manufacturer's instructions for installation and layout..

Document version 08.02.2004

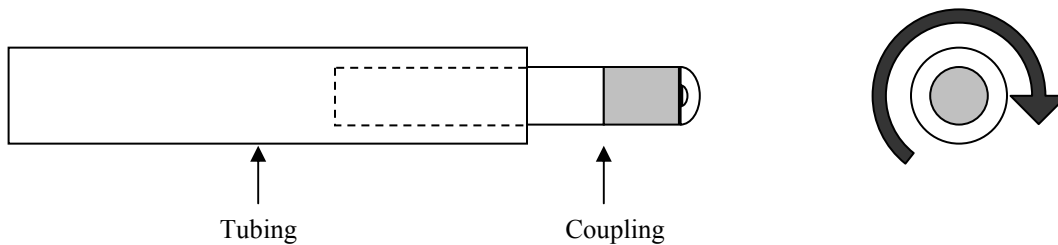


## Installation of #86 Pipe Coupling

Couplings come assembled and ready for application. If they come unassembled or loosened during shipping then assemble as per the detail below. **DO NOT OVERTIGHTEN** prior to inserting the coupling into the #75 tubing. Overtightening the bolt will cause the gasket to expand and make installation of the coupling difficult.



1. Insert assembled coupling into the end of one pipe so that half of the solid aluminum shaft is inserted.
2. Begin twisting the exposed half of the coupling in a clock-wise motion until the rubber gasket engages the pipe. Continue to tighten until the coupling can not be easily pulled out of the pipe.



3. Slide next section of tubing over the exposed half of the coupling. Begin twisting the tubing in a clock-wise motion until the rubber gasket engages the pipe. Continue to tighten until the tubing can not be easily pulled off of the coupling.
4. If the system needs to be unassembled, simply turn the tubing counter clockwise until the coupling disengages. Then turn the coupling's solid shaft counter clockwise until it disengages from the tubing.

