



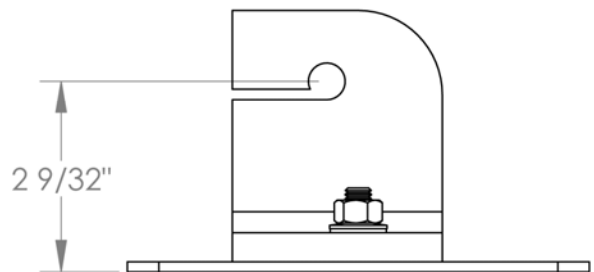
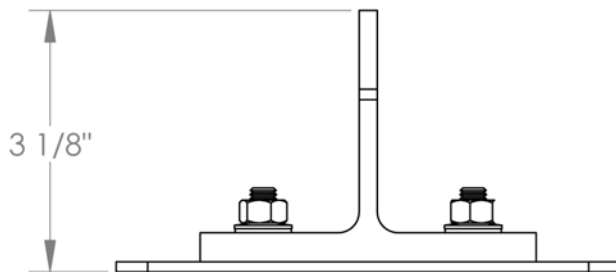
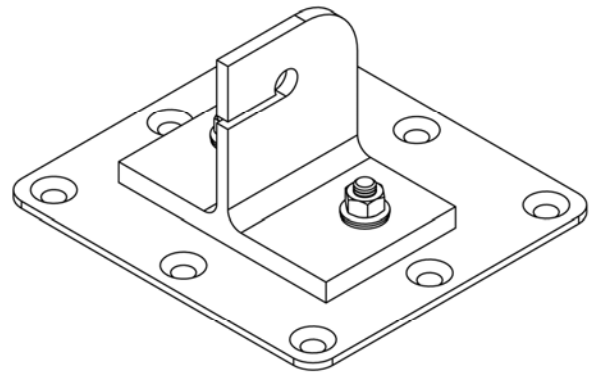
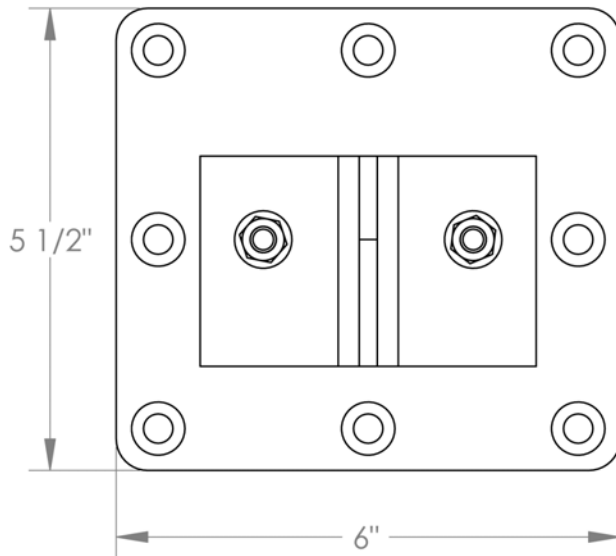
#015S One Bar/Rail Snow Guard for Membrane Roofs

NOTES;

1. SNOW GUARDS TO BE INSTALLED ACCORDING TO MANUFACTURER'S SPECIFICATIONS.
2. DO NOT SCALE DRAWINGS.
3. CONTACT MANUFACTURER FOR DETAILED LAYOUT.
4. PRODUCTS MAY VARY FROM ILLUSTRATION.
5. ITEMS SUBJECT TO CHANGE WITHOUT NOTICE.

REVISIONS		
REV.	DESCRIPTION	DATE
A	RAISED BAR HEIGHT ¾"	4/12/2006
B	CHANGED BASE PLATE SIZE	3/13/2008

- | | |
|-----------------------------------------------------------|------------------------------------------------------|
| <input checked="" type="checkbox"/> CONFIGURATION | <input checked="" type="checkbox"/> BRACKET MATERIAL |
| <input checked="" type="checkbox"/> 1 BAR (SHOWN) | <input checked="" type="checkbox"/> ALUMINUM |
| <input checked="" type="checkbox"/> BAR SYSTEM COMPONENTS | <input checked="" type="checkbox"/> BASE PLATE |
| <input checked="" type="checkbox"/> #76 BAR | <input checked="" type="checkbox"/> STAINLESS STEEL |
| <input type="checkbox"/> 2" INSERT (OPTIONAL) | |
| <input type="checkbox"/> APINE FLASHING (OPTIONAL) | |



#015S Snow Guard for Membrane Roofs

#015S Pipe-Style Snow Guard Specification Sheet

PART 1 - GENERAL

1.1 SUMMARY

A. WORK INCLUDES

1. #015S Snow guard that attaches directly to the roof deck.
2. Provide appropriate snow guard and fasteners for the roof system.

B. RELATED SECTIONS

1. Section 07600: Flashing and Sheet Metal MasterFormat™ 2004 07 60 00
2. Section 07500: Membrane Roofing MasterFormat™ 2004 07 50 00
3. Division 7: Thermal and Moisture Protection.

1.2 SYSTEM DESCRIPTION

A. COMPONENTS:

1. #015S Snow guard system consists of snow guard bracket and base plate
2. Aluminum bar:
 - a. Manufactured from 6061-T6 alloy and temper aluminum extrusions conforming to ASTM B221 and AA Aluminum Standards and Data.
 - b. Receptacle in face to receive color-matched metal strips.
 - c. Provide splice connectors ensuring alignment and structural continuity at end joints.
3. Color Strips: Same material and finish as roof panels; obtained from roof panel manufacturer
4. Snow and Ice Clips: Aluminum, with rubber foot, minimum 3 inches wide.
5. Fasteners
 - a. To be of metal compatible with snow guards.
 - b. Fasteners should be selected for compatibility with the roof deck.
 - c. Fastener strength should exceed or be equal to that of the snow guard system.
6. Adhesive: to be membrane roof manufacturer approved.

B. DESIGN REQUIREMENTS:

1. Spacing to be recommended by manufacturer or building engineer.
2. A minimum of 5 fasteners per snow guard base plate.
3. It is important to design new structures or assess existing structures to make sure that they can withstand retained snow loads.

1.3 SUBMITTAL

- A. Submit manufacturer's specifications, standard detail drawings, recommended layout and installation instructions.

1.4 QUALITY ASSURANCE

- A. Installer to be experienced in the installation of specified roofing material and snow guards for not less than 5 years in the area of the project.

1.5 DELIVERY / STORAGE / HANDLING

- A. Inspect material upon delivery and order replacements for any missing or defective items. Keep material dry, covered and off the ground until installed.

#015S Snow Guard for Membrane Roofs

PART 2 - PRODUCTS

2.1 MANUFACTURER

- A. Alpine SnowGuards. A division of Vermont Slate & Copper Services Inc., 289 Harrel Street, Morrisville VT (888) 766-4273, www.alpinesnowguards.com.

2.2 MATERIALS

- A. Snow guard bracket is extruded and milled 6061-T6 Aluminum
- B. Base Plate is 11 gauge 1/8" thick (choose one)
 - 1. 1018 mild Steel
 - 2. 302 or 304 Stainless Steel.
 - 3. Aluminum bar is 6005-T6 extruded Aluminum.
- C. Nuts and bolts are 304 Stainless Steel with an 18-8 finish.

2.3 FINISH

- A. Mill finish

PART 3 - EXECUTION

3.1 EXAMINATION

- A. Substrate: Inspect roof system to be properly attached and installed to withstand additional loading incurred. Notify General Contractor of any deficiencies before installing Alpine SnowGuards.

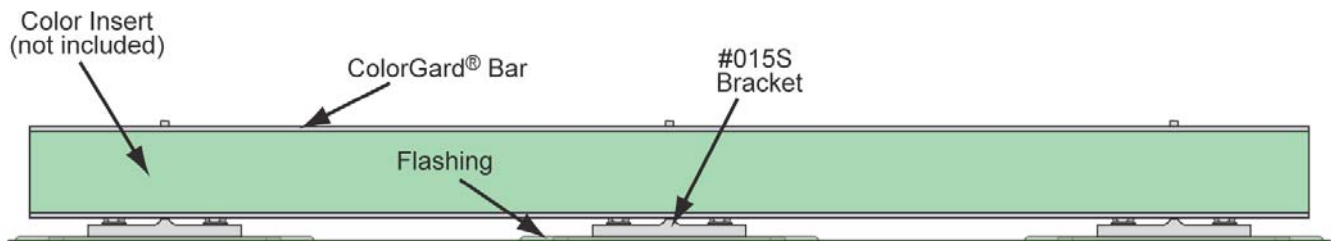
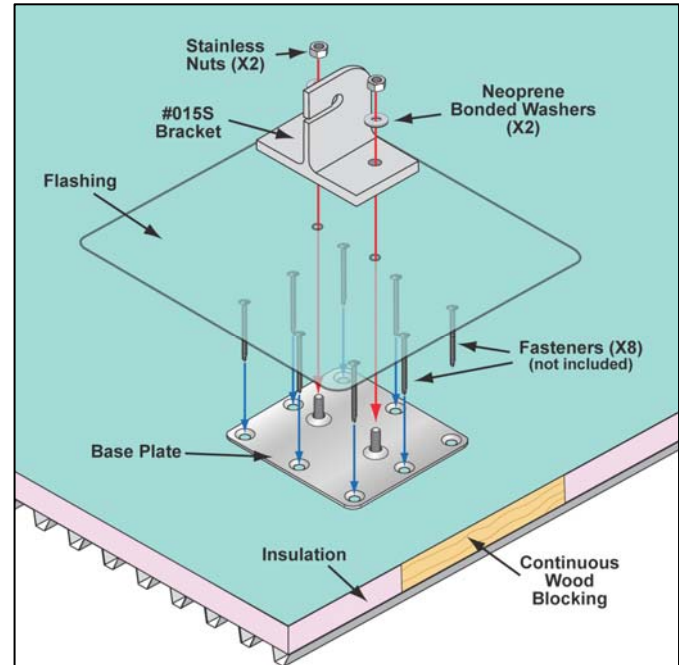
3.2 INSTALLATION

- A. Comply with architectural drawings for location and with Manufacturer's instructions.

#015S Snow Guard for Membrane Roofs

#015S One Bar/Rail Snow Guard for Membrane Roofs Assembly Instructions

- I. Base Plate (The base plate is the flat piece with the two threaded studs.)
 - A. A Continuous block is required underneath the membrane roof surface to attach the base plate. This base flange is 6" wide and 5.5" high. Mounting this system over insulation alone may crush the insulation and cause the roof to leak.
 - B. Place the base plate on top of the finished membrane roof.
 - C. Before fastening base plate through membrane to mounting block below, apply a generous amount of acceptable sealer under the flange.
 - D. Consult with manufacturer, project engineer or fastener company to determine the fastener required to attach the base plate to the wood block. See test information for assistance.
- II. Membrane Flashing of Base Plate
 - A. Use an Alpine SnowGuards membrane patch or an acceptable piece of flashing material 12" square.
 - B. Cut two small holes in membrane flashing to fit tightly over threaded studs.
 - C. Before installing flashing apply a generous amount of acceptable sealer around threaded studs.
 - D. Apply flashing over base plate using proper mastics or installation techniques so as to create a water tight patch.
 - E. The threaded studs are now the only part of the base plate exposed. NOTE: Due to the sealer applied around the studs there may be bleed out at this opening. When the snow guard block is installed over the studs and tightened this bleed out will help to create a water tight compression fitting.
- III. Installation of snow guard block
 - A. Install snow guard block over threaded studs.
 - B. Place one neoprene bonded washer over each stud.
 - C. Place locking nut over neoprene bonded washer and tighten.
 - D. Insert ColorGard bar through the slots in the uprights.
 - E. Insert 2" high metal strip into ColorGard bar.



#015S Snow Guard for Membrane Roofs